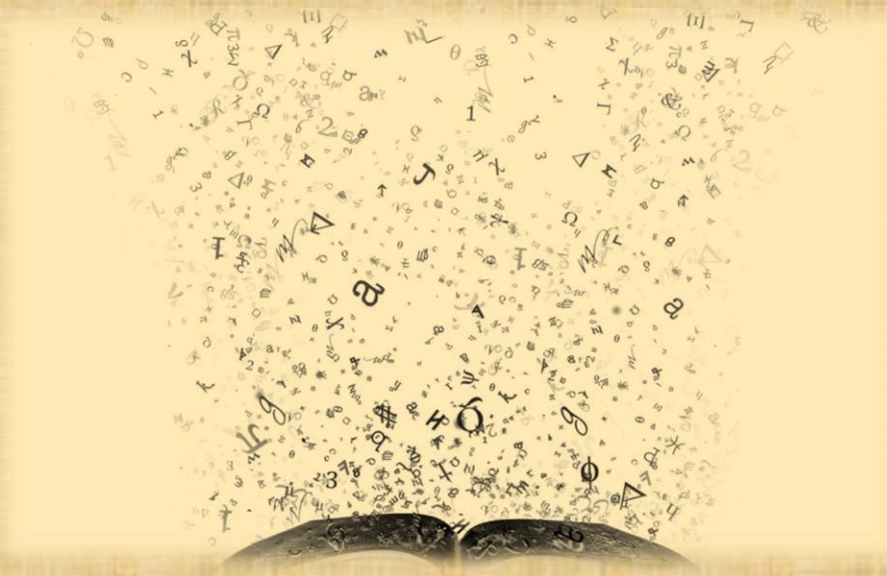


GRAMMATICALLY SPEAKING



GRAMMATICAL FORMS

Parts of speech

Giselle Aguilera Barragán Pickens

English
Course

INDEX

Grammatical Forms 3

Parts of Speech

Nouns & Verbs..... 4

Adjectives & Adverbs.....5

Determiners.....7

Prepositions & Pronouns..... 9

Conjunctions &

Exclamations..... 10

Glossary.....11

GRAMMATICAL FORMS

KEY CONCEPTS.

Grammatical Forms

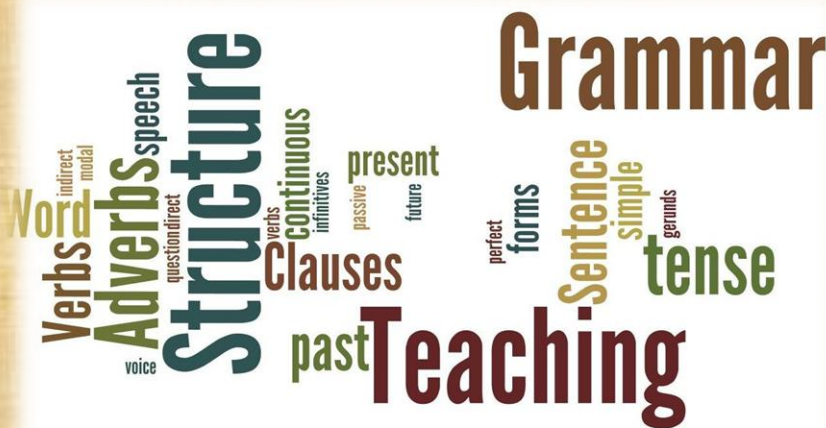


These refer to how words are made up and presented in speech or writing. For example, the form of the plural nouns in English is "base word +s"; the form of the gerund is "infinitive + ing".

We can identify grammatical forms in **parts of speech**, grammatical structures and words that contain **prefixes** and **suffixes**.

There are 9 parts of speech in English: nouns, verbs, adjectives, adverbs, determiners, prepositions, pronouns, conjunctions and exclamations.

The forms of some parts of speech varies according to the function the parts of speech have in a sentence.



PARTS OF SPEECH

NOUNS.

Their function is to name people, places, things, qualities, ideas, or activities to act as the **subject/object** of the verb. Some of their subcategories are:

The **subject** is the person, place, or thing that is doing something.

The **object** is the person, place, or thing that something is being done to.

For example:

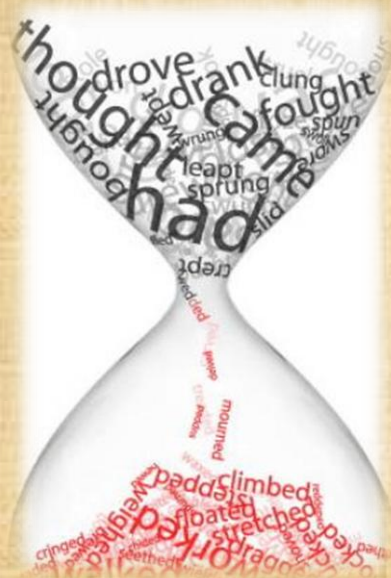


- countable
- uncountable.
- proper.
- common.
- abstract.
- collective.

VERBS.

Their function is to show an action, state or experience. Some of their subcategories are:

- transitive.
- intransitive.
- regular.
- irregular.
- participles.
- gerunds.
- infinitives.



- modals.
- multiword verbs.
- phrasal verbs.
- tenses.
- active voice.
- passive voice.
- imperative.

ADJECTIVES.

Their function is to describe or give more information about a noun, pronoun or part of a sentence. Some of their subcategories are:

- Comparative.
- Superlative.



ADVERBS.

Their function is to say more about how, when, where, etc. Something happens by adding information to adjectives, adverbs, other adverbs of sentences. Some of their subcategories are:



- degree.
- manner.
- time.
- focus.
- frequency.
- quantity.
- attitude markers.

These are some examples of manner adverbs:

- Uneasily
- Weirdly
- Cheerfully
- Expertly
- Wholeheartedly
- Randomly
- Brutally
- Really
- Bristly
- Sloppily
- Wickedly



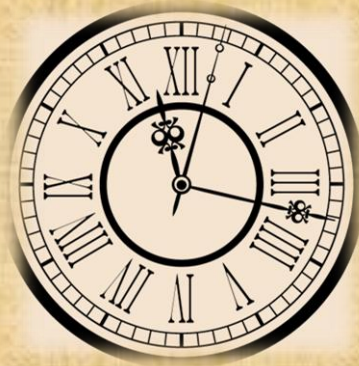
Some adverbs tell the place of an action, or where it occurred. Adverbs like this would be:

- Here
- There
- Everywhere
- Somewhere
- In
- Inside
- Underground
- Out
- Outside
- Upstairs
- Downstairs



These are some examples of adverbs of time:

- Now
- First
- Last
- Early
- Yesterday
- Tomorrow
- Today
- Later
- Regularly
- Often
- Never
- Monthly
- Always
- Usually



Adverbs can describe to what extent something was done or an action was executed.

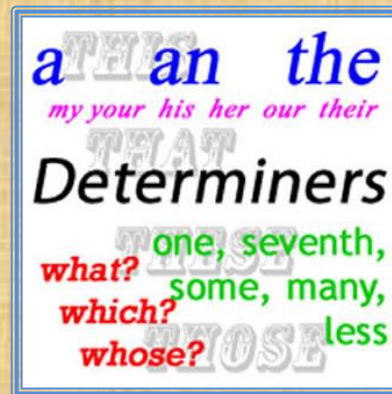
including:

- Very
 - Too
 - Almost
 - Also
 - Only
- 
- Enough
 - So
 - Quite
 - Almost
 - Rather

DETERMINERS.

Their function is to make clear which noun is referred to. Some of their subcategories are:

- possessive adjectives.
- articles.
- demonstrative adjectives.
- quantifiers.



The definite and indefinite *articles* are all determiners.

- Definite article - *the*
- Indefinite article - *a* or *an* (*a* is used before a consonant sound; *an* is used before a vowel sound.)



There are four *demonstrative determiners* in English and they are: **this, that, these and those.**

- *This* is my camera. (Demonstrative used as a pronoun, subject of the verb *is*)
- *This* camera is mine. (Demonstrative used as a determiner modifying the noun *camera*.)



Possessive adjectives - **my, your, his, her, its, our, your, their** - modify the noun following it in order to show possession.

Possessive determiners are different from possessive pronouns - **mine, his, hers, yours, ours, their.**

- Possessive pronouns can stand alone and are not followed by nouns.
- Possessive determiners, on the other hand, are followed by nouns.



Quantifiers are followed by nouns which they modify. Examples of quantifiers include:

some, any, few, little, more, much, many, each, every, both, all, enough, half, little, whole, less etc.

PREPOSITIONS.

Their function is to show the relationship between a noun, noun phrase or pronoun and another word or phrase. Some of their subcategories are:

- personal.
- possessive.
- relative.
- reflexive.



On, in, at, for, ago, before.

To, by, next to, beside, under, below.

Over, above, across, through, into, towards.



PRONOUNS.

Their function is to replace or refer to a noun or noun phrase mentioned earlier or about to be mentioned. Some of their subcategories are:

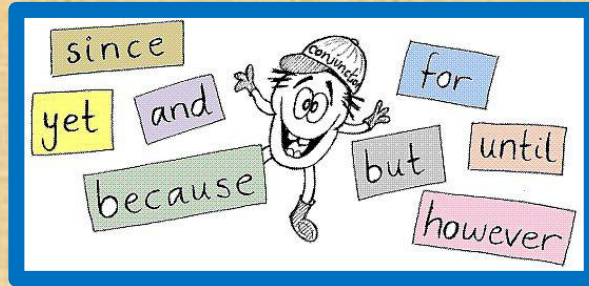


- Personal.
- Possessive
- Relative
- Reflexive

CONJUNCTIONS.

Their function is to join words, sentences or parts of sentences. Some their subcategories are:

- Reason:
Because
- Addition:
And
- Contrast:
However
- Time: Since, yet



- Condition:
Until
- Purpose: in
order that, lest.
- Result: so
that

EXCLAMATIONS

Their function is to show a strong feeling. Especially in informal spoken language. Some of the subcategories could be: feelings of doubt ("er...") or pain ("ow...!")



GLOSSARY

Parts of speech. A part of speech or word class describes how words behave in sentences, how they operate and combine grammatically with other words.

Grammatical structure. The arrangement of words into patterns which have meaning.

Prefixes. A group of letters added at the beginning of a base word.

Suffixes. A group of letters added at the end of a base word.

Subject: Person, place or thing that is doing something.

Object: Person, place or thing to which something is being done to.

By, next to, beside. Left or right of somebody or something

Under. On the ground, lower than (or covered by) something else

Below. Lower than something else but above ground

Over. Covered by something else, meaning more than, getting to the other side (also across), overcoming an obstacle

Above. Higher than something else, but not directly over it

Across. Getting to the other side (also over)

Through. Something with limits on top, bottom and the sides

To. Movement to person or building, movement to a place or country

Into. Enter a room / a building

Towards. Movement in the direction of something (but not directly to it)

END OF SESSION

